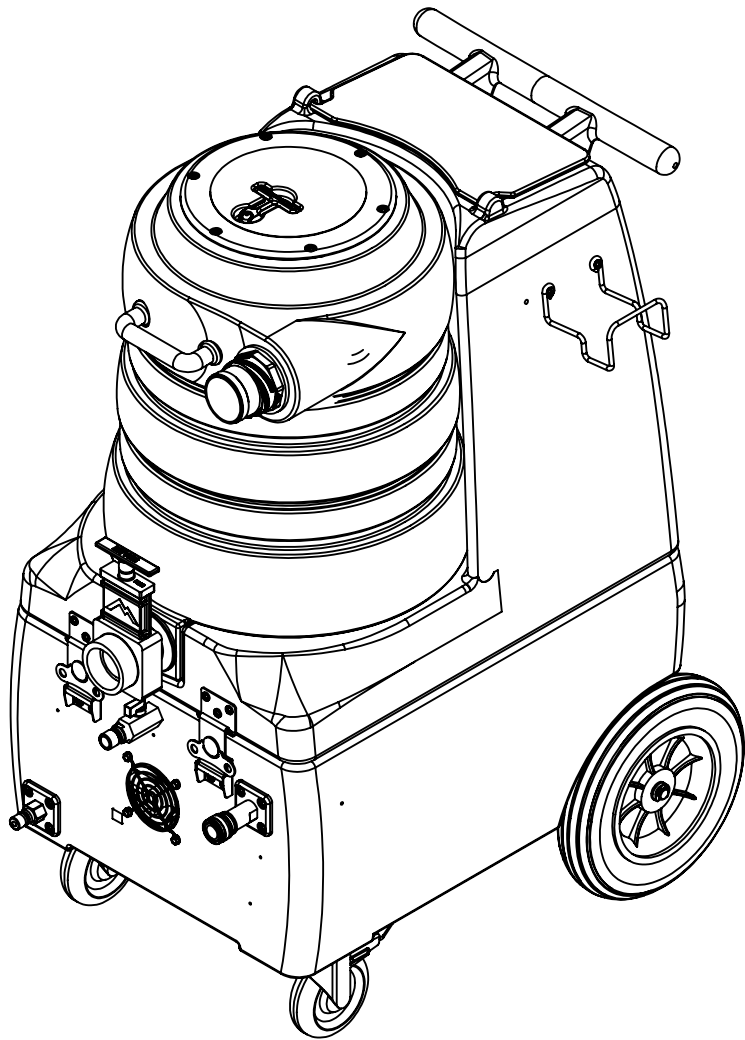


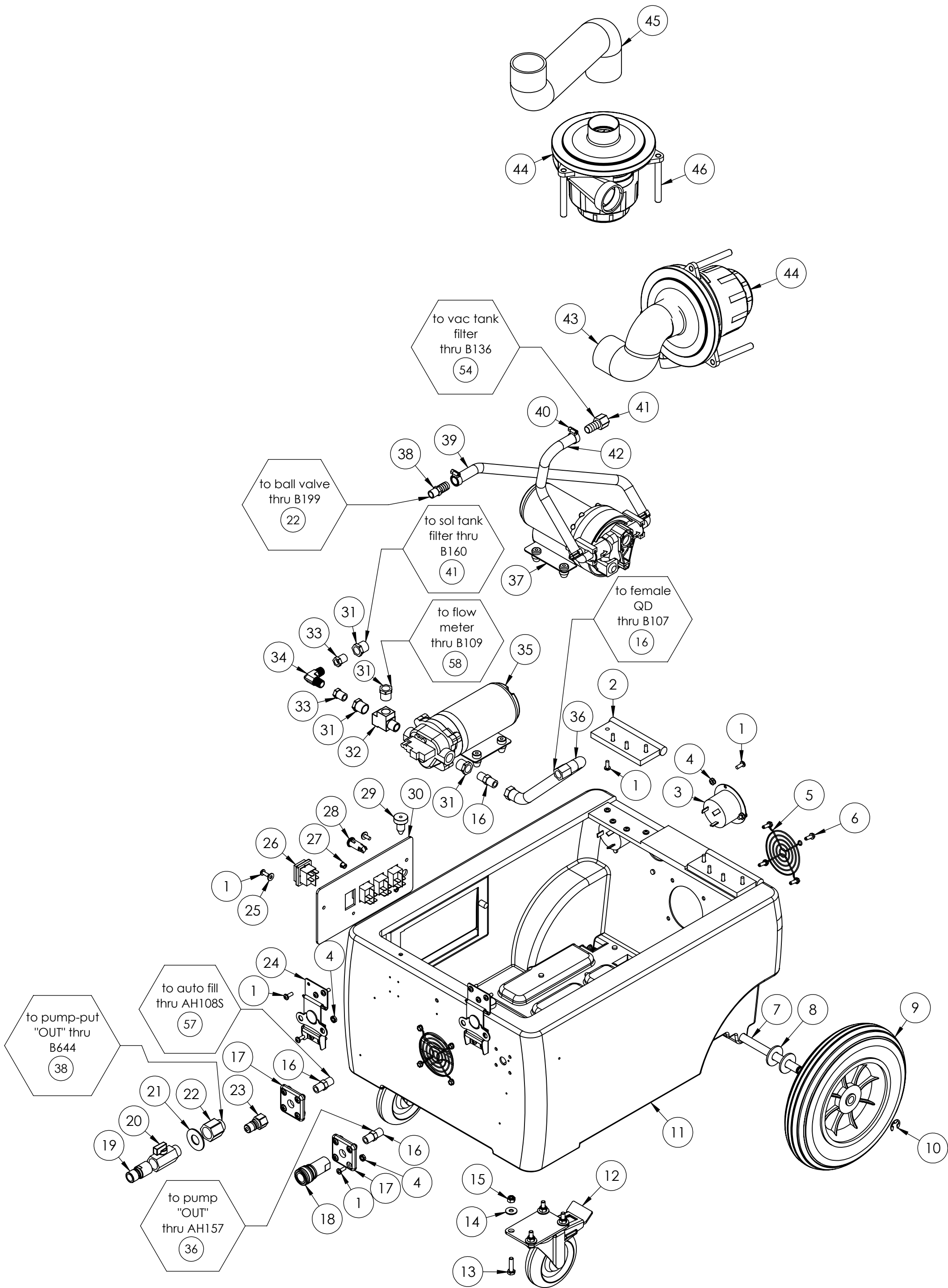
	8	7	6		5	4	3	2	1
	ITEM NO.	PART NO.	DESCRIPTION	QTY.		ITEM NO.	PART NO.	DESCRIPTION	QTY.
	1	H230	screw, 10-32 x 1/2" phil pan head, s/s	48		62	P697	sol tank, breeze	1
	2	H487	bracket, hinge	2		63	H547	hanger, wire for injection sprayer	1
	3	E360	flanged male inlet recaptacle, 230V, 20A	2		64	H215	nut, hex, 1/4-20 s/s	1
F	4	H273	nut, kep, #10-32 zinc	22		65	H211	washer, 1/4"id x 1"od, flat, s/s	4
	5	H296	guard, cooling fan, wire	2		66	G052	washer, buna 1-1/8" od x 3/16" id	4
	6	H343	screw, #10 x 5/8" hex head zinc	8		67	B303	nipple, 3" long x 1/4" npt x 1/4" npt	3
	7	H232	axle, 18.80" x .50"	1		68	B142	coupling, 1/4" fpt x 1/4" fpt	2
	8	H254	washer, axle, cut 1/2" id	4		69	B167	elbow, 90 deg street, 1/2" fpt x 1/2" mpt	1
	9	H392	wheel, 10", foam filled	2		70	B198	adapter, 3/4" fgh x 1/2" mpt, w/ gasket	1
	10	H042	c-clip, 12mm, external	2		71	H541A	valve, float, autofill	1
	11	P696	base, breeze	1		72	H203	bolt, 1/4-20 x 1-1/4"	1
	12	H668	caster, 4", black hub & gray tread	2		73	G062	lid, sol tank	1
	13	H342	bolt, 1/4-20 x 1" hex head, s/s	8		74	B131	fitting, 1/4" barb x 1/8" fpt	2
E	14	H210	washer, 1/4" flat, s/s	8		75	B143	street elbow, 90 degrees, 1/8"	2
	15	H216	nut, lock, 1/4-20, nylon insert, s/s	8		76	B129	nipple, hex, 1/8" mpt x 1/8" mpt	2
	16	B107	nipple, hex, 1/4"mpt x 1/4"mpt	6		77	H384	washer, 3/8 flat, s/s	2
	17	H484	plate, mounting, QD	2		78	H325	flow meter, electric truckmount	1
	18	B102	quick disconnect, 1/4" fqd x 1/4" fpt	1		79	PH634-15	sol hose, 1/4" kuri 100psi	1
	19	B205B	quick disconnect, 1/2" mpt x 3/4" mqd, garden hose	1		80	PH634-15	sol hose, 1/4" kuri 100psi	1
	20	B656A	valve, ball, 1/2" mpt x 1/2" fpt, s/s	1		81	H333	filter, mesh, auto dump, 1/2" npt	1
	21	H299	washer, 11/16"id x 1-1/2"od x .075, s/s	7		82	H225	valve, drain, 1-1/2"	1
	22	B199	coupler, 1/2" fpt x 1/4" fpt	2		83	H485	handle, aluminum grip, black	1
	23	B101	quick disconnect, 1/4" mqd x 1/4" fpt	1		84	H135	Cuff-Lynx, 2" m cuff x 2" mpt	1
	24	H486	latch, front, set, large	2		85	A926	elbow, inlet assembly 2"	1
D	25	H289	washer, 10 flat, s/s	2		86	G091	gasket, 7", vac lid	1
	26	E515	switch, rocker, 2 position	4		87	G090	lid, vac tank, clear, 7"	1
	27	H422	plug, dome 3/8", black	2		88	H304	screw, #8 x 5/8 phil oval, s/s	6
	28	E512B	light, indicator, blue	1		89	G003	filter, foam, 2", vac stack, 1/2"	1
	29	G068	bumper, 7/8" x 1/4" head	2		90	G097	filter, screen mesh, 1.90" dia	1
	30	H641	plate, switch	1		91	P502	adapter, 1.5" pvc, fslip x fslip	1
→	31	B105	bushing, brass, 3/8"mpt x 1/4"	6		92	PH633-13	pipe, pvc, 1-1/2"	1
	32	B169	tee, 3/8" Street Tee, MPTxFPTxFPT	2		93	P520	adapter, 1.5" mpt pvc	1
	33	B104	bushing, brass, 1/4" mpt x 1/8" fpt	2		94	G002	gasket, cam fitting polyethylene, 2.35" OD 1.90" ID	1
	34	B136	elbow, brass, 90 deg, 1/4" mpt x 1/4" mpt	1		95	H300	cuff, hose, 1-1/2 x 1-1/2, wire	1
	35	C322	pump, 200psi, piston115V	1		96	B113	tee, 1/4" fpt x 1/4" fpt x 1/4" fpt	1
C	36	AH157	hose, 3/8" x9" (OAL), f x fsw	1		97	H212	flat washer, 9/16"ID x 1 1/16"OD, AN960-C916	2
	37	C381	pump out, 3.3 gpm, 115v	1		98	B156	nut, 1/4" npt	1
	38	B644	barb, 1/2" barb x 1/4" mpt	1		99	E373	level switch, vacuum shut-off, rear threads	2
	39	PH615K	sol hose, 1/2", polywire reinforced	1		100	P698	vac tank, breeze	1
	40	H347	clamp, hose, 5/16-29/32	4					
	41	B160	adapter, brass, 1/2" barb x 3/8" fsw, ball end	3					
	42	PH615K	sol hose, 1/2", polywire reinforced	1					
	43	PH628-14	vac hose, 2", black, wire reinforced	1					
	44	C348	vac motor, lx, hybrid, w/inlet tube, 173 cfm, 120v	2					
	45	PH628-28	vac hose, 2", black, wire reinforced	1					
	46	H503	vac support, 3 stage, 3.25", no thrds	6					
B	47	B130	45 deg, street elbow, brass, 1/4" male NPTF	1					
	48	H876	washer, 1/2 flat, s/s	2					
	49	B103	elbow, 90 deg street, 1/4"mpt x 1/4" fpt	4					
	50	B110	adapter, brass, 1/4" sw barb x 1/4" fpt, w/gasket	2					
	51	B119A	filter, strainer, 1/2" fpt	1					
	52	B210	bushing, brass, 1/2"mpt x 3/8" fpt, hex	1					
	53	B216	nipple, brass, 3/8" x close	1					
	54	B186	elbow, 90 deg street, 3/8"mpt x 3/8" fmpt	2					
	55	PH615K	sol hose, 1/2", polywire reinforced	1					
	56	B652	elbow, 90 deg, 3/8"mpt x 1/4"mpt	1					
	57	AH108S	sol hose, 1/4" x 24 1/2", (OAL), f x fsw, 3000psi	1					
A	58	B109	barb, 1/4" barb x 1/4" mpt	1					
	59	PH634-15	sol hose, 1/4" kuri 100psi	1					
	60	H768	bolt, 1/4-20 x 3/4" serrated hex flange, zinc	6					
	61	H390A	bracket, "L", 2" x 2"	2					

	5	4	3	2	1
	ITEM NO.	PART NO.	DESCRIPTION	QTY.	
	62	P697	sol tank, breeze	1	
	63	H547	hanger, wire for injection sprayer	1	
	64	H215	nut, hex, 1/4-20 s/s	1	
	65	H211	washer, 1/4"id x 1"od, flat, s/s	4	
	66	G052	washer, buna 1-1/8" od x 3/16" id	4	
	67	B303	nipple, 3" long x 1/4" npt x 1/4" npt	3	
	68	B142	coupling, 1/4" fpt x 1/4" fpt	2	
	69	B167	elbow, 90 deg street, 1/2" fpt x 1/2" mpt	1	
	70	B198	adapter, 3/4" fgh x 1/2" mpt, w/ gasket	1	
	71	H541A	valve, float, autofill	1	
	72	H203	bolt, 1/4-20 x 1-1/4"	1	
	73	G062	lid, sol tank	1	
	74	B131	fitting, 1/4" barb x 1/8" fpt	2	
	75	B143	street elbow, 90 degrees, 1/8"	2	
	76	B129	nipple, hex, 1/8" mpt x 1/8" mpt	2	
	77	H384	washer, 3/8 flat, s/s	2	
	78	H325	flow meter, electric truckmount	1	
	79	PH634-15	sol hose, 1/4" kuri 100psi	1	
	80	PH634-15	sol hose, 1/4" kuri 100psi	1	
	81	H333	filter, mesh, auto dump, 1/2" npt	1	
	82	H225	valve, drain, 1-1/2"	1	
	83	H485	handle, aluminum grip, black	1	
	84	H135	Cuff-Lynx, 2" m cuff x 2" mpt	1	
	85	A926	elbow, inlet assembly 2"	1	
	86	G091	gasket, 7", vac lid	1	
	87	G090	lid, vac tank, clear, 7"	1	
	88	H304	screw, #8 x 5/8 phil oval, s/s	6	
	89	G003	filter, foam, 2", vac stack, 1/2"	1	
	90	G097	filter, screen mesh, 1.90" dia	1	
	91	P502	adapter, 1.5" pvc, fslip x fslip	1	
	92	PH633-13	pipe, pvc, 1-1/2"	1	
	93	P520	adapter, 1.5" mpt pvc	1	
	94	G002	gasket, cam fitting polyethylene, 2.35" OD 1.90" ID	1	
	95	H300	cuff, hose, 1-1/2 x 1-1/2, wire	1	
	96	B113	tee, 1/4" fpt x 1/4" fpt x 1/4" fpt	1	
	97	H212	flat washer, 9/16"ID x 1 1/16"OD, AN960-C916	2	
	98	B156	nut, 1/4" npt	1	
	99	E373	level switch, vacuum shut-off, rear threads	2	
	100	P698	vac tank, breeze	1	

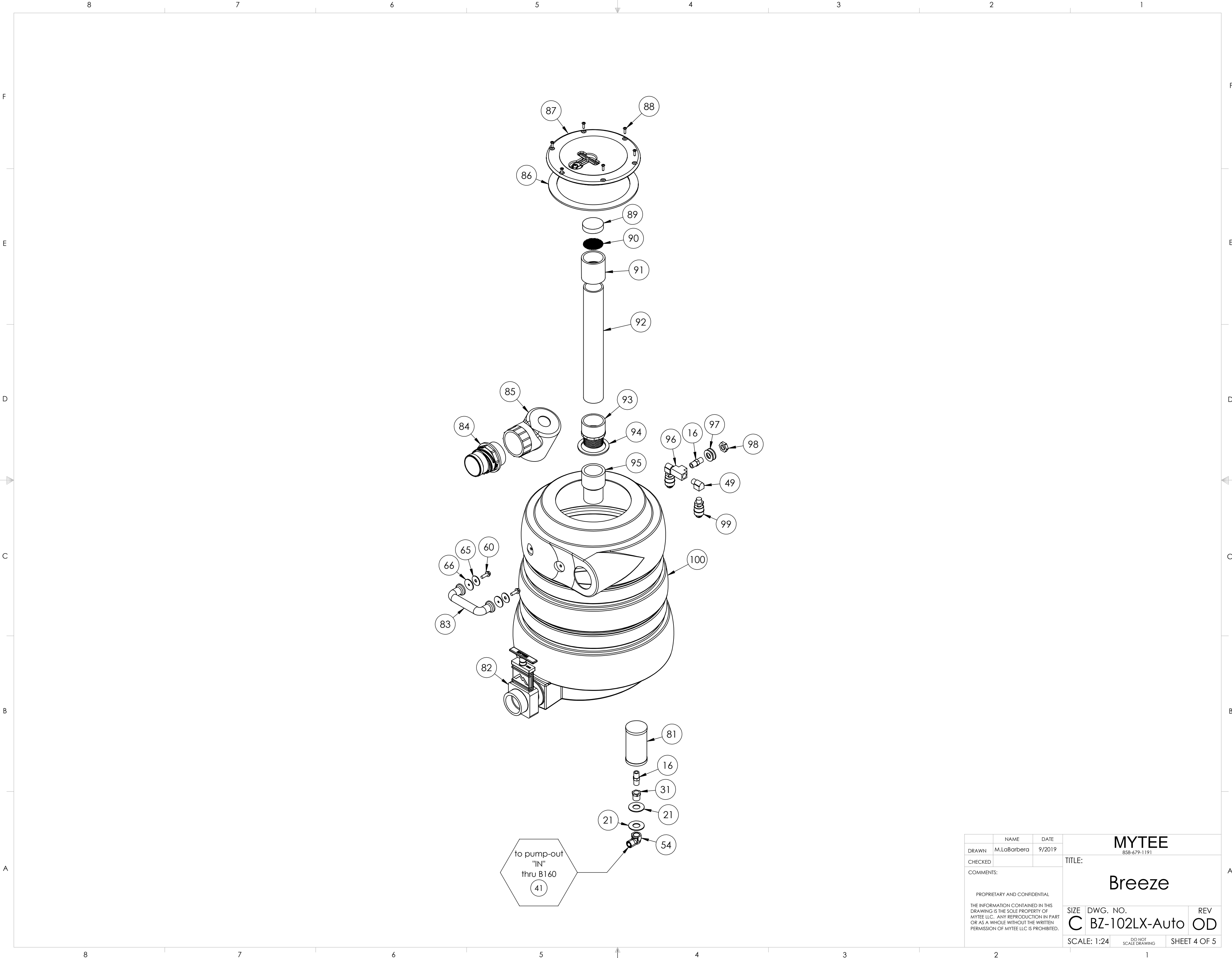
REVISIONS			
REV.	DESCRIPTION	DATE	APPROVED
OD	ORIGINAL DRAFT	9/2019	JFL



	NAME	DATE	MYTEE	
DRAWN	M.LaBarbera	9/2019	858-679-1191	
CHECKED			TITLE:	
COMMENTS:			Breeze	
PROPRIETARY AND CONFIDENTIAL			SIZE	DWG. NO.
THE INFORMATION CONTAINED IN THIS DRAWING IS THE SOLE PROPERTY OF MYTEE LLC. ANY REPRODUCTION IN PART OR AS A WHOLE WITHOUT THE WRITTEN PERMISSION OF MYTEE LLC IS PROHIBITED.			C	BZ-102LX-Auto
			SCALE: 1:24	REV OD
			DO NOT SCALE DRAWING	SHEET 1 OF 5

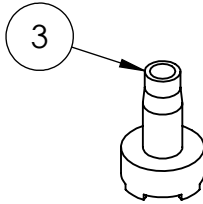
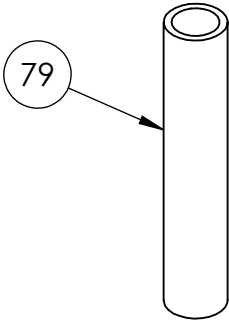
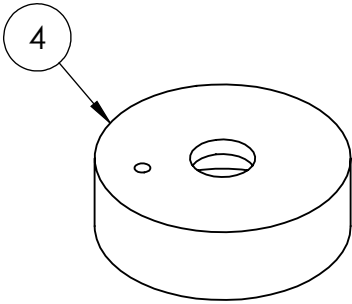
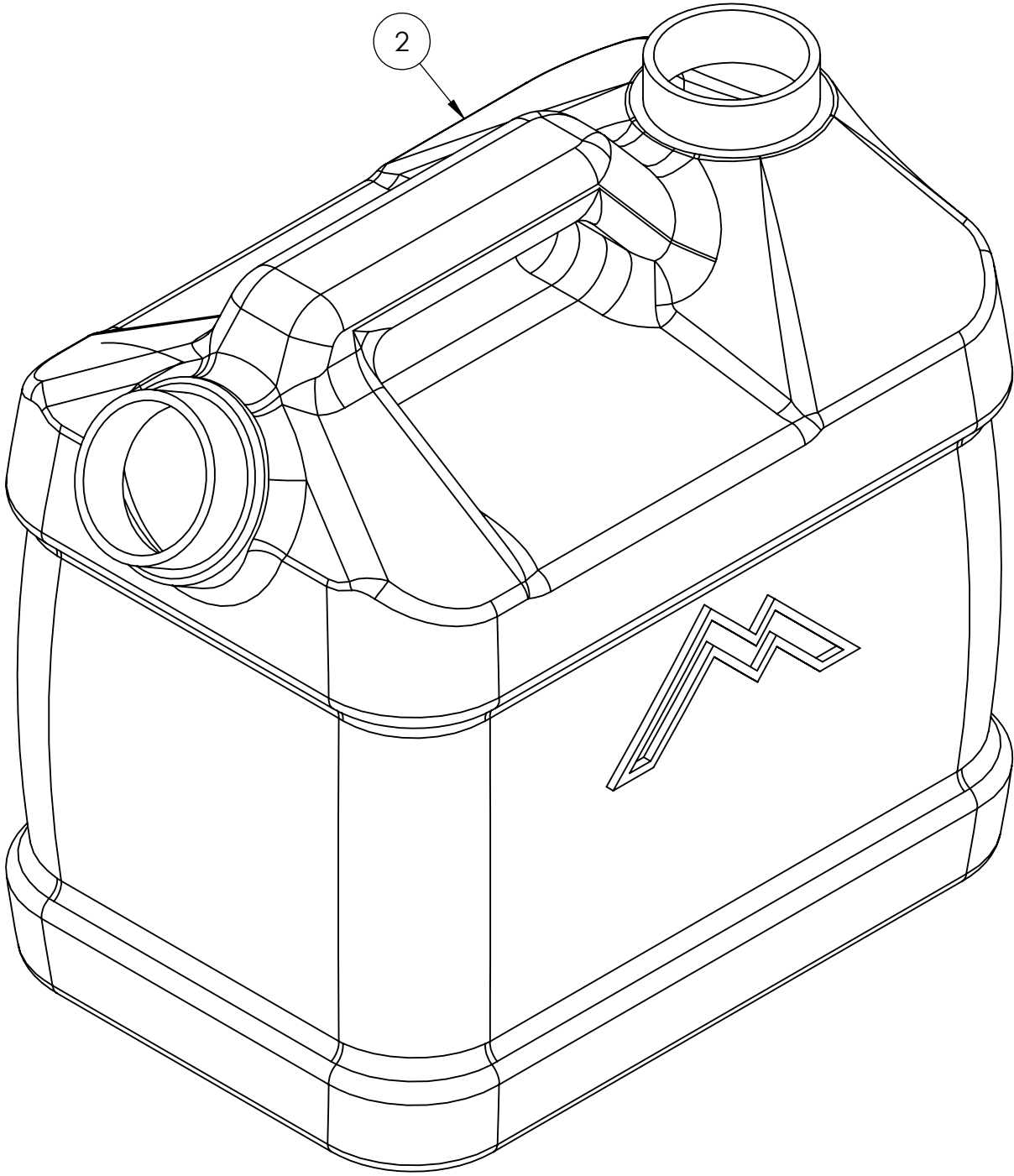
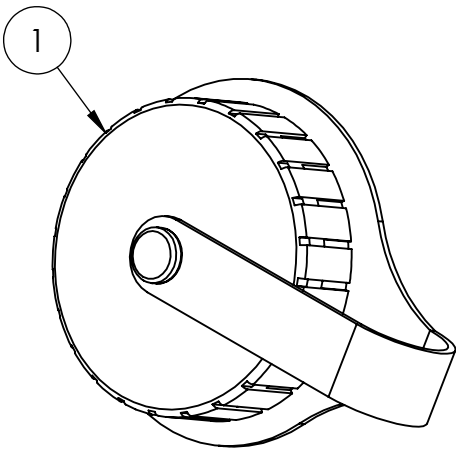


		NAME	DATE	MYTEE	
DRAWN	M.LaBarbera	9/2019		858-679-1191	
CHECKED				TITLE:	
COMMENTS:				Breeze	
PROPRIETARY AND CONFIDENTIAL				SIZE	DWG. NO.
THE INFORMATION CONTAINED IN THIS DRAWING IS THE SOLE PROPERTY OF MYTEE LLC. ANY REPRODUCTION IN PART OR AS A WHOLE WITHOUT THE WRITTEN PERMISSION OF MYTEE LLC IS PROHIBITED.				C	BZ-102LX-Auto
				SCALE: 1:24	REV
				DO NOT SCALE DRAWING	OD
				SHEET 2 OF 5	



		NAME	DATE	MYTEE	
DRAWN	M.LaBarbera	9/2019		858-679-1191	
CHECKED				TITLE:	
COMMENTS:				Breeze	
PROPRIETARY AND CONFIDENTIAL THE INFORMATION CONTAINED IN THIS DRAWING IS THE SOLE PROPERTY OF MYTEE LLC. ANY REPRODUCTION IN PART OR AS A WHOLE WITHOUT THE WRITTEN PERMISSION OF MYTEE LLC IS PROHIBITED.				SIZE	REV
				DWG. NO.	OD
				SCALE: 1:24	SHEET 4 OF 5

ITEM NO.	PART NO.	DESCRIPTION	QTY.
1	G036	cap, 2.5" threaded, tethered	1
2	P535	bottle, 5 quart, w/ caps	1
3	H456D	hose w/filter for injection valve	1
4	H456B	cap (only) w/ hole	1



2

79

3

4

1

	NAME	DATE	MYTEE		
DRAWN	M.LaBarbera	9/2019	858-679-1191		
CHECKED			TITLE:		
COMMENTS:			chemical injection, 5 gallon		
PROPRIETARY AND CONFIDENTIAL THE INFORMATION CONTAINED IN THIS DRAWING IS THE SOLE PROPERTY OF MYTEE LLC. ANY REPRODUCTION IN PART OR AS A WHOLE WITHOUT THE WRITTEN PERMISSION OF MYTEE LLC IS PROHIBITED.			SIZE C	DWG. NO. BZ-102LX-Auto	REV OD
SCALE: 1:24			DO NOT SCALE DRAWING		SHEET 5 OF 5