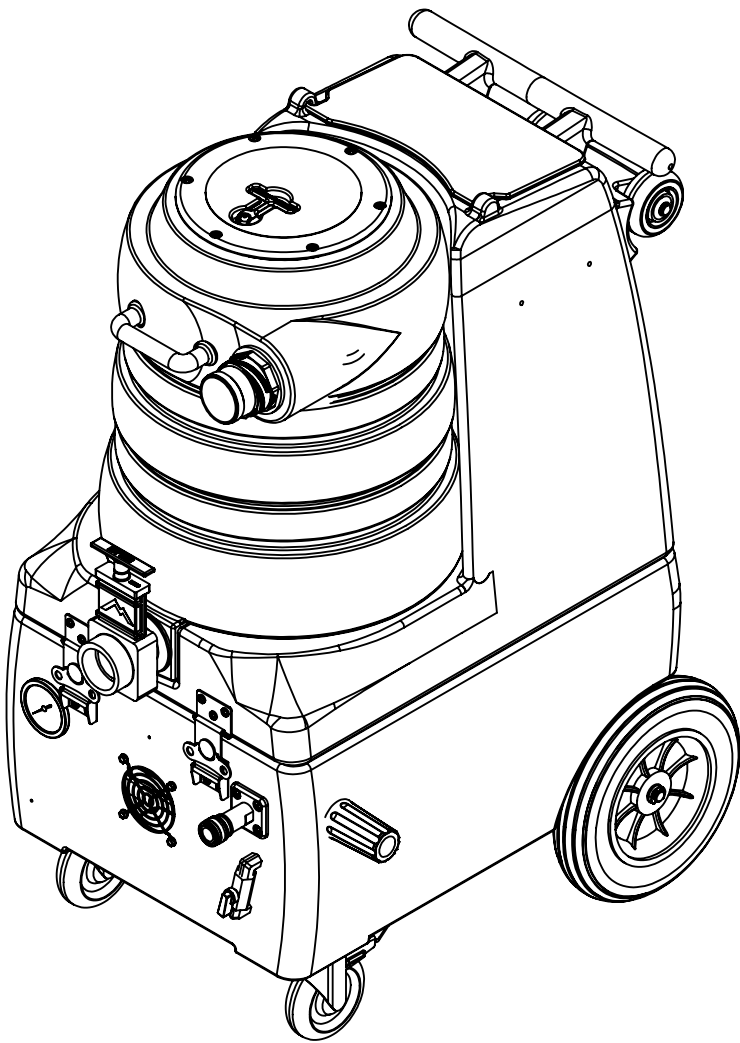


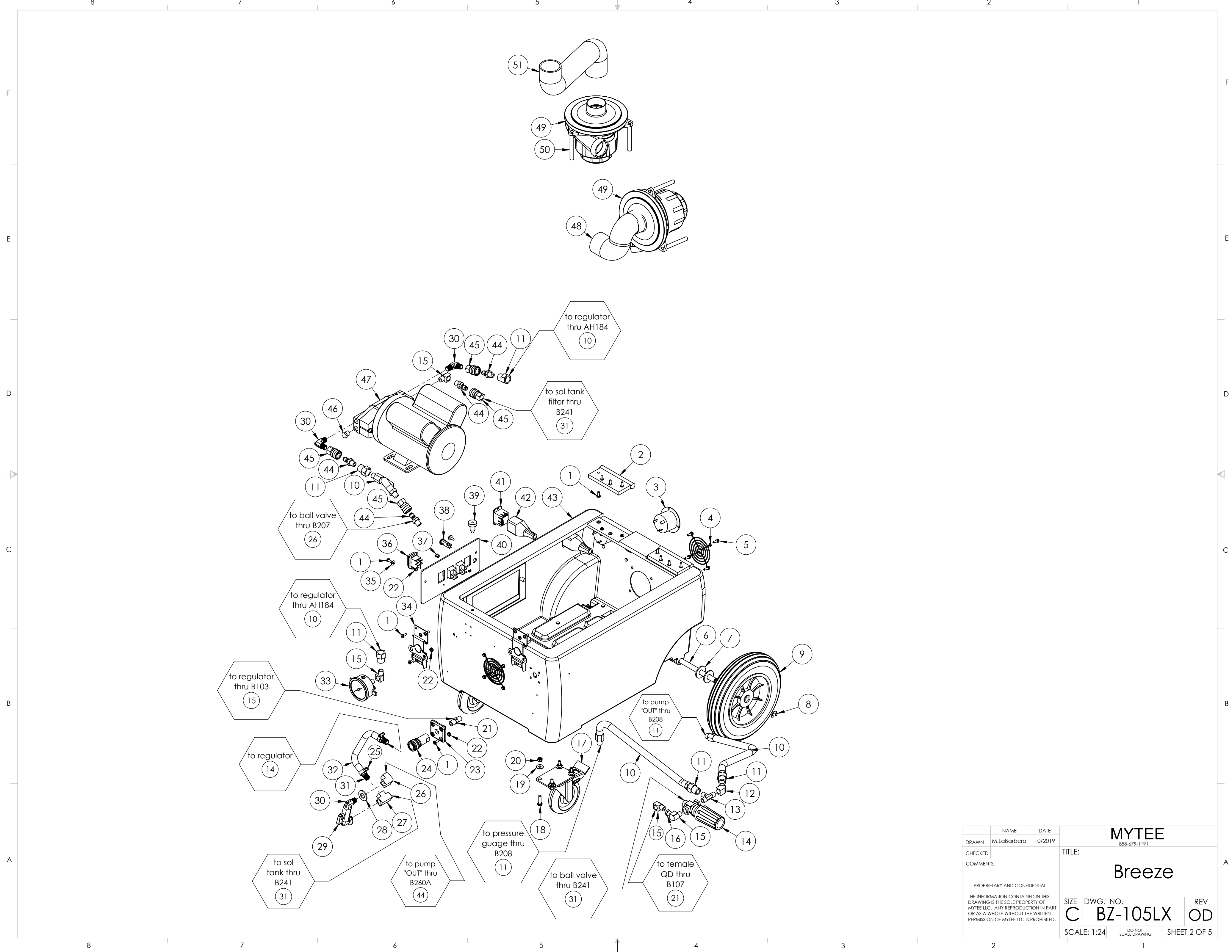
ITEM NO.	PART NO.	DESCRIPTION	QTY.
1	H230	screw, 10-32 x 1/2", phil pan, s/s	36
2	H487	bracket, hinge	2
3	E360	flanged male inlet recaptacle, 230V, 20A	2
4	H296	guard, cooling fan, wire	2
5	H343	screw, #10 x 5/8" hex head zinc	8
6	H232	axle, 18.80" x .50"	1
7	H254	washer, axle, cut 1/2" id	4
8	H042	c-clip, 12mm, external	2
9	H392	wheel, 10", foam filled	2
10	AH103	hose, pulse, 3/8" x 14.5", 1/4 FSW x 1/4 FPT	1
11	B208	coupling, 3/8" fpt x 1/4" fpt	5
12	B130	45 deg, street elbow, brass, 1/4" male NPTF	2
13	B135	tee, 1/4" mpt x 1/4" mpt x 1/4" mpt	1
14	C313C	regulator, 450 psi, silver spring	1
15	B103	elbow, 90 deg street, 1/4"mpt x 1/4" fpt	7
16	B104	bushing, brass, 1/4" mpt x 1/8" fpt	1
17	H668	caster, 4", black hub & gray tread	2
18	H342	bolt, 1/4-20 x 1" hex head, s/s	8
19	H210	washer, 1/4" flat, s/s	8
20	H216	nut, lock, 1/4-20, nylon insert, s/s	8
21	B107	nipple, hex, 1/4"mpt x 1/4"mpt	2
22	H273	nut, kep, #10-32 zinc	14
23	H484	plate, mounting, QD	1
24	B102	quick disconnect, 1/4" fqd x 1/4" fpt	1
25	H347	clamp, hose, 5/16-29/32	6
26	B207	elbow, brass, 90 deg, 1/4" fpt x 1/4" fpt	1
27	B113	tee, 1/4" fpt x 1/4" fpt x 1/4" fpt	2
28	H212	flat washer, 9/16"ID x 1 1/16"OD, AN960-C916	6
29	B656	valve, ball, 1/4" fpt x 1/4" fpt, s/s	1
30	B136	elbow, brass, 90 deg, 1/4" mpt x 1/4" mpt	4
31	B241	adapter, brass, 3/8" barb x 1/4"mpt	5
32	PH615K-28	sol hose, 1/2", polywire reinforced	1
33	H308D	gauge, pressure, 2000 PSI	1
34	H486	latch, front, set, large	2
35	H289	washer, 10 flat, s/s	2
36	E515	switch, rocker, 2 position	3
37	H422	plug, dome 3/8", black	2
38	E512B	light, indicator, blue	1
39	G068	bumper, 7/8" x 1/4" head	2
40	H641	plate, switch	1
41	E632	relay, shut-off switch, mechanical float, 115v	2
42	G165	cover, relay	2
43	P696	base, breeze	1
44	B260A	quick disconnect, 1/4" mqd x mpt, open-spray	4
45	B259A	qd, brass, 1/4" fqd x fpt	4
46	B127	plug, brass, 1/4"mpt, hex	1
47	C342	pump, 500psi, 120V/230V	1
48	PH628-14	vac hose, 2", black, wire reinforced	1
49	C348	vac motor, lx, hybrid, w/inlet tube, 173 cfm, 120v	2
50	H503	vac support, 3 stage, 3.25", no thrds	6
51	PH628-28	vac hose, 2", black, wire reinforced	1
52	B186	elbow, 90 deg street, 3/8"mpt x 3/8" fmpt	1
53	H299	washer, 11/16" id x 1-1/2" od x .075, s/s	2
54	B216	nipple, brass, 3/8" x close	1
55	B119A	filter, strainer, 1/2" fpt	1
56	B210	bushing, brass, 1/2"mpt x 3/8" fpt, hex	1
57	B160	adapter, brass, 1/2" barb x 3/8" fsw, ball end	1
58	PH615K-28	sol hose, 1/2", polywire reinforced	1
59	PH615K-28	sol hose, 1/2", polywire reinforced	1
60	B142A	coupling, brass, 1/4" fpt x 1/4" fpt	1
61	H768	bolt, 1/4-20 x 3/4" serrated hex flange, zinc	6
62	H390A	bracket, "L", 2" x 2"	2

ITEM NO.	PART NO.	DESCRIPTION	QTY.
63	P697	sol tank, breeze	1
64	G062	lid, sol tank	1
65	H215	nut, hex, 1/4-20 s/s	1
66	H211	washer, 1/4" id x 1" od, flat, s/s	4
67	G052	washer, buna 1-1/8" od x 3/16" id	4
68	H203	bolt, 1/4-20 x 1-1/4"	1
69	A145	Handle, Wheel Kit, LTD	1
70	H225	valve, drain, 1-1/2"	1
71	H485	handle, aluminum grip, black	1
72	H135	Cuff-Lynx, 2" m cuff x 2" mpt	1
73	A926	elbow, inlet assembly 2"	1
74	G091	gasket, 7", vac lid	1
75	G090	lid, vac tank, clear, 7"	1
76	H304	screw, #8 x 5/8 phil oval, s/s	6
77	G003	filter, foam, 2", vac stack, 1/2"	1
78	G097	filter, screen mesh, 1.90" dia	1
79	P502	adapter, 1.5" pvc, fslip x fslip	1
80	PH633-13	pipe, pvc, 1-1/2"	1
81	P520	adapter, 1.5" mpt pvc	1
82	G002	gasket, cam fitting polyethylene, 2.35" OD 1.90" ID	1
83	H300	cuff, hose, 1-1/2 x 1-1/2, wire	1
84	B156	nut, 1/4" npt	1
85	E373	level switch, vacuum shut-off, rear threads	2
86	P698	vac tank, breeze	1

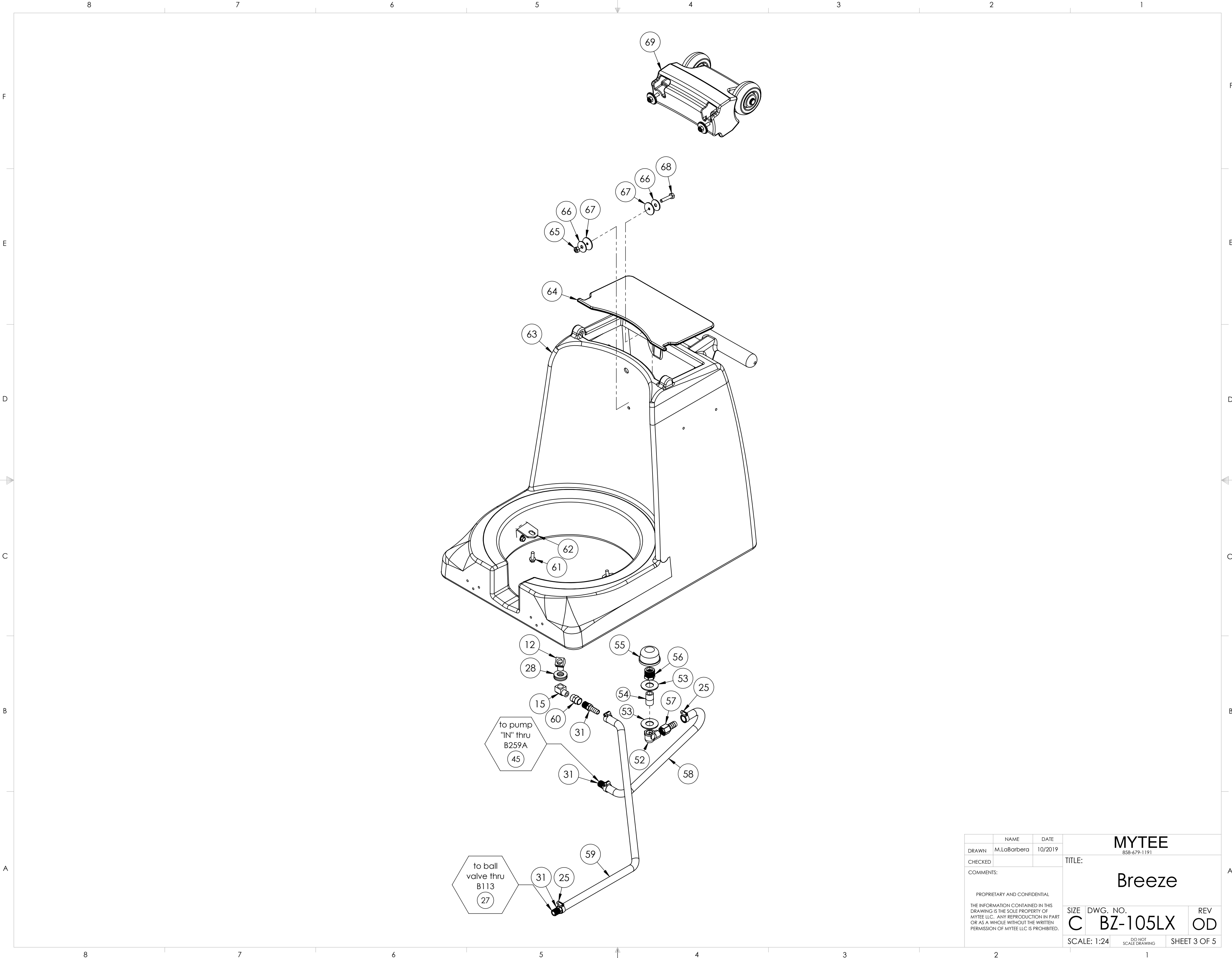
2		1	
REVISIONS			
REV.	DESCRIPTION	DATE	APPROVED
OD	ORIGINAL DRAFT	10/2019	JFL



	NAME	DATE	MYTEE	
DRAWN	M.LoBarbera	10/2019	858-679-1191	
CHECKED			TITLE:	
COMMENTS:			Breeze	
PROPRIETARY AND CONFIDENTIAL				
THE INFORMATION CONTAINED IN THIS DRAWING IS THE SOLE PROPERTY OF MYTEE LLC. ANY REPRODUCTION IN PART OR AS A WHOLE WITHOUT THE WRITTEN PERMISSION OF MYTEE LLC IS PROHIBITED.			SIZE	REV
			C	OD
			DWG. NO.	
			BZ-105LX	
			SCALE: 1:24	
			DO NOT SCALE DRAWING	
			SHEET 1 OF 5	



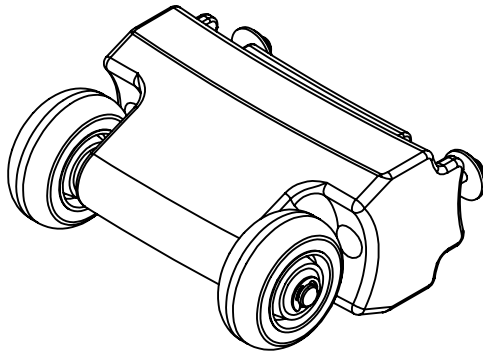
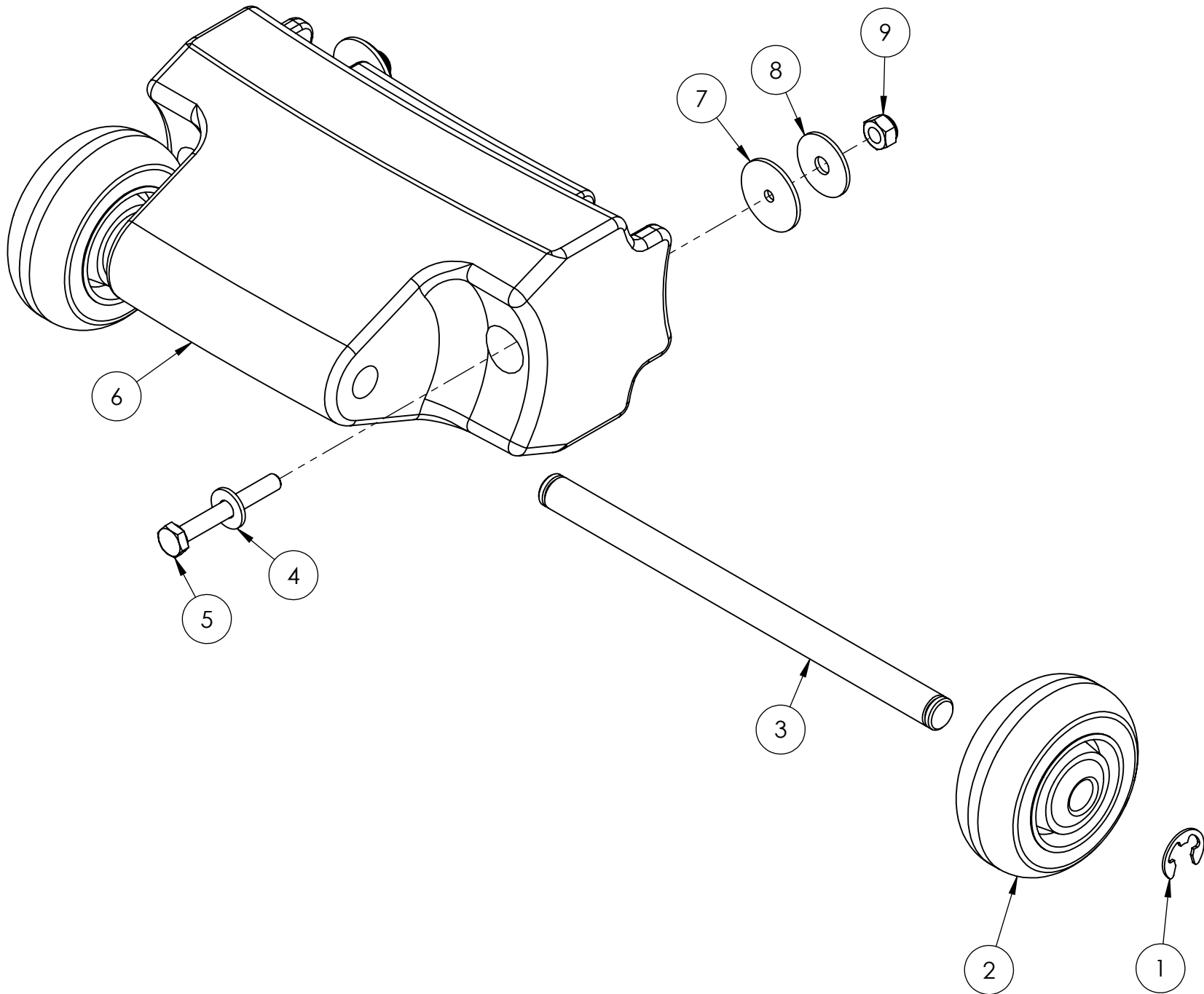
		NAME	DATE	MYTEE 858-679-1191	
DRAWN		M.LaBarbera	10/2019		
CHECKED				TITLE: Breeze	
COMMENTS:					
PROPRIETARY AND CONFIDENTIAL THE INFORMATION CONTAINED IN THIS DRAWING IS THE SOLE PROPERTY OF MYTEE LLC. ANY REPRODUCTION IN PART OR AS A WHOLE WITHOUT THE WRITTEN PERMISSION OF MYTEE LLC IS PROHIBITED.				SIZE C	DWG. NO. BZ-105LX
				SCALE: 1:24	REV OD
				DO NOT SCALE DRAWING	SHEET 2 OF 5



	NAME	DATE	MYTEE		
DRAWN	M.LaBarbera	10/2019	858-679-1191		
CHECKED			TITLE:		
COMMENTS:			Breeze		
PROPRIETARY AND CONFIDENTIAL THE INFORMATION CONTAINED IN THIS DRAWING IS THE SOLE PROPERTY OF MYTEE LLC. ANY REPRODUCTION IN PART OR AS A WHOLE WITHOUT THE WRITTEN PERMISSION OF MYTEE LLC IS PROHIBITED.			SIZE C	DWG. NO. BZ-105LX	REV OD
			SCALE: 1:24	DO NOT SCALE DRAWING	SHEET 3 OF 5

ITEM NO.	PART NO.	DESCRIPTION	QTY.
1	H042	c-clip, 12mm, external	2
2	H358B	wheel, 3"	2
3	H507	axle, 7.94" x .50" dia	1
4	H210	washer, 1/4" flat, s/s	2
5	H169	bolt, 1/4-20 x 2", hex head	2
6	P650	wheel handle, LTD	1
7	G052	washer, buna 1-1/8" od x 3/16" id	2
8	H211	washer, 1/4" id x 1" od, flat, s/s	2
9	H216	nut, lock, 1/4-20, nylon insert, s/s	2

REVISIONS			
REV.	DESCRIPTION	DATE	APPROVED
OD	ORIGINAL DRAFT	3/2019	JFL



	NAME	DATE	MYTEE		
DRAWN	M.LaBarbera	3/2019	858-679-1191		
CHECKED			TITLE:		
COMMENTS: PROPRIETARY AND CONFIDENTIAL THE INFORMATION CONTAINED IN THIS DRAWING IS THE SOLE PROPERTY OF MYTEE LLC. ANY REPRODUCTION IN PART OR AS A WHOLE WITHOUT THE WRITTEN PERMISSION OF MYTEE LLC IS PROHIBITED.			Handle, Wheel Kit, LTD		
			SIZE	DWG. NO.	REV
			C	BZ-105LX	OD
			SCALE: 1:4	DO NOT SCALE DRAWING	SHEET 5 OF 5